

PERSONAL PROTECTION EQUIPMENT



Safety Helmet with Visor & Chin Strap
Art. No. 00899 200 97



Safety Helmet - STANDARD
Art. No. 01984 001/002/003/004/005/
006/007
White, Orange, Green, Blue, Yellow, Red, Pink.



Full Body Harness's
Art. No. 01984 318 91 - Scaf Single lanyard
Art. No. 01984 318 92 - Snap Single Lanyard
Art. No. 01984 318 93 - Scaf Double Lanyard
Art. No. 01984 318 94 - Snap Double Lanyard



Earmuff FOLDABLE
Art. No. 00899 300 361



Ear Plugs
Ergonomic, cone-shaped disposable ear plugs for use in extremely noisy environments.
Art. No. 00899 300 331
Art. No. 00899 300 332 - Corded



FFP2 NR Dust Mask
For protection against solid and liquid aerosols. Suitable for protecting the user against low-toxicity contaminants in concentrations of up to 10 times the AGW-value.
Art. No. 00899 121 102



SOFT FLEX Gloves
Tight and comfortable fit. **EN388: 4.1.3.1**
Art. No. 00899 401 068/069/070/071
Size: 8/9/10/11



CUT LEVEL 5 Gloves
Excellent grip and protection allowing maximum flexibility and dexterity. **EN388: 4.5.4.3**
Art. No. 00899 451 357/358/359/360/361
Size: 7/8/9/10/11



Welding Gloves
Used for welding purposes. **EN388: 4.1.4.4**
Art. No. 00984 310 001 - 10.5"
Art. No. 00984 310 002 - 16"



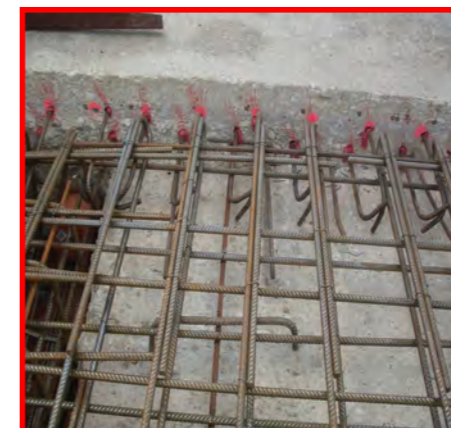
Reflective Vest
Art. No. 01984 318 8/81/82 - M/L/XL



Safety Shoes & Boots
Art. No. 05357 209...Shoe
Art. No. 05357 210...Boots



CHEMICAL ANCHOR SYSTEMS



WIT-VM250 2-component reaction resin mortar, vinylester styrene-free

WIT-VM250, 420ml

Art. No. 00903 450 205

Static Mixer for WIT-VM250

Art. No. 00903 420 001

Applicator Gun for WIT-VM250

Art. No. 00891 038 0

Approvals

ETA-12/0164

ETA-13/1040

ETA-12/0166

DIBt Z-21.8-2003

ETA-16/075



New!!!

Proof of Performance

Approvals

European Technical Approval

Option 1
for cracked (M12-M30) and
uncracked concrete (M8-M30)



1. Applications

- Approved for cracked (M12 to M30, concrete tensile zone) and uncracked concrete (M8 to M30, concrete pressure zone), C20/25 to C50/60
- Suitable for securing wooden structures, metal structures, metal profiles, brackets, screens, plumbing objects, pipes, cable conduits etc.

Cleaning drilled hole

Clean drill hole: blow out 4x, brush out mechanically 4x, blow out 4x. From M20 and anchoring depth > 240 mm, blow out with oil-free compressed air using the appropriate compressed-air nozzles.

3. Features

- Cracked concrete (M12 to M30) and uncracked concrete (M8 to M30) European Technical Approval ETA-12/0164
- Subsequently mortared-in reinforcement attachments, see Info 29.2: ETA-12/0166, Z-21.8-2003 (only coaxial cartridge 330 ml)
- 2-component reaction resin mortar, vinylester styrene-free
- Temperature in the anchoring base during processing and hardening: -10°C to +40°C
- Ambient temperature after complete hardening -40°C to +120°C
- Transport and storage temperature (cartridge): +5°C to +25°C
- Shelf life (store in a cool, dry and dark place):
Coaxial cartridge (150 ml, 330ml): 18 months
Hose film cartridge (300ml): 9 months

- Injection mortar WIT-VM 250 can also be used for subsequently mortared-in reinforcement attachments
- Injection mortar WIT-VM 250 can also be used for anchors in the masonry (solid and perforated stone) and aerated concrete.

2. Advantages

- Variable anchoring depths
- Hardened injection mortar largely seals off the drill hole
- Cartridge can be used up to expiration of the best before date by replacing the static mixer or by being closed again with sealing cap

Setting Instructions

Concrete



Hose film cartridge, 300 ml:
Cut off hose film clip before use!
Initial mortar material approx. 20 cm



MASTER MACHINES

13mm Percussion Drill

Art. No. 00702 322 1

Universal 13mm percussion drill with 750 watt, convincingly fast drilling progress and long service life.



Drilling (Max):

- Softwood - 35mm
- Brick - 22mm
- Concrete - 20mm
- Steel - 13mm



3-10mm Masonry Drill Set
Art. No. 00637 200 001

24mm SDS Hammer Drill

Art. No. 05708 202 1

Lightweight, manageable 750-W hammer drill with interchangeable drill chuck and chiselling function for universal use



Drilling (Max):

- Concrete: 4-24mm
(Ideal in concrete 6-16mm)
- Hollow Drill bit into masonry: 68mm



SDS Quadro Drill Set
Art. No. 00648 050 001



SDS Quadro Drills are the perfect solution for drilling into concrete with reinforcements as well as hard materials.

32mm Drill and Chisel Hammer (SDS Plus)

Art. No. 00702 543 1

Rugged drill and chisel hammer in the top SDS-plus performance class for drilling diameters up to 32mm in concrete.



Drilling (Max):

- Concrete 6-32mm
- Steel - 13mm
- Wood - 32mm
- Hollow drill bits in masonry - 90mm



SDS Quadro Drill Set
Art. No. 00648 050 001



10Kg Hammer Chisel (SDS Max)

Art. No. 00702 571 1

Hardest hitting 10Kg hammer (25 J) with long service life, for heavy duty demolition work and for making holes in walls.



SDS Max Chisels
Art. No. 00647...

EXPANSION ANCHORS Force controlled anchor

Expansion/Sleeve Anchors

Art. No. 01905...



Dia.	External Dia. (mm)	Total Length L (mm)	Fixture Thickness Max. (mm)	Fixture Hole Dia. (mm)	Drilled Hole Dia. (mm)	Drilled Hole Depth (mm)	Torque in concrete (Nm)	Torque solid brick, brick & sandstone	Art. No.
M6x55	12	55	10	6.5	12	40	6.5	5	01905 06 55
M8x65	30	65	90	12	14	50	15	7.5	01905 08 65
M10x75	35	75	110	14	16	60	27	13	01905 010 75
M12x90	45	90	125	18	20	75	50	23	01905 012 90
M16x130	60	130	170	24	25	115	120	-	01905 016 130

Installation



- Take drill hole-Ø and drill hole depth from the table.
- Clean the drill hole with a brush, then blow it out with a purging pump (not necessary with perforated brick).
- Insert the Shield Anchor into the building material.
- Position the Building materials and insert the screw.
- Tighten the screw with a torque spanner to the predetermined value T_{inst} .

Often bought with...



1/4" Torque Wrench (4-20Nm)

Art. No. 00714 71 20



1/2" Torque Wrench (40-200Nm)

Art. No. 00714 71 23

WIT-VM250 2-component reaction resin mortar, vinylester styrene-free

Anchor Rod W-VD-A/S galvanised steel

Art. No. 05915...



Dia.	Fastening height h_{fix} [mm]	Total Length L (mm)	Effective anchoring depth h_{ef} [mm]	Nom. drill dia. d_o [mm]	Drilled hole depth $h_o \geq$ [mm]	ETA approval	Art. No.
M8	20	110	80	10	80	ETA-12/0164	05915 108 110
M10	30	130	90	12	90	ETA-12/0164	05915 110 130
M12	35	160	110	14	110	ETA-12/0164	05915 112 160
M16	45	190	125	18	125	ETA-12/0164	05915 116 190
M20	60	260	170	24	170	ETA-12/0164	05915 120 260

Accessories

Art. No. 00905 499...

For Diameter	Drill nominal dia. d_o (mm)	Cleaning Brush	Machine Mounting	Blow-Out Pump
M6/50 without sleeve	8	00905 499 020	Hexagon 00905 499 101	00903 990 001
With sleeve	12	00905 499 022		
M8/50 without sleeve	10	00905 499 021	SDS 00905 499 102	
With sleeve	12	00905 499 022		
M8 without sleeve	10	00905 499 021		
With sleeve	18	00905 499 026		
M10 without sleeve	12	00905 499 022		
With sleeve	18	00905 499 024		
M12 without sleeve	14	00905 499 023		
With sleeve	18	00905 499 024		



Cleaning Brush...



Hex. Mounting...



SDS Mounting...



Blow Pump...

Sieve Sleeve for Masonry

Art. No. 00903 44...



Dia.	Total Length L (mm)	Nom. drill dia. d_o [mm]	Drilled hole depth $h_o \geq$ [mm]	Nom. drill dia. d_o [mm]	Effective anchoring depth h_{ef} [mm]	ETA approval	Art. No.
M12	80	12	85	12	80	ETA-13/0037 & ETA-16/0757	00903 44 123
M16	85	16	90	16	85	ETA-13/0037 & ETA-16/0757	00903 44 164
M16	130	16	135	16	130	ETA-13/0037 & ETA-16/0757	00903 44 165
M20	85	20	90	20	85	ETA-13/0037 & ETA-16/0757	00903 44 203

WIT-PE500 Chemical injection mortar, pure epoxy

WIT-PE500, 585ml

Art. No. 00903 480 005

Static Mixer for WIT-PE500

Art. No. 00903 488 101

Applicator Gun for WIT-PE500

Art. No. 00891 003 105

Approvals

ETA-09/0040

ETA-07/0313

DIBt Z-21.8-1834

New!!!



Proof of performance

<p>Permissions</p> <p>European Technical Assessment Option 1 for cracked (M12-M30) and non-cracked concrete (M8-M30)</p>
--

Drill hole cleaning

Clean the drill hole: 2x blow-out, 2x mechanical brush-out, 2x blow-out

From M20, blow out with oil-free compressed air using the appropriate compressed air nozzles.

1. Areas of application

- Approved for cracked (M12 to M30, tension zone) and non-cracked concrete (M8 to M30, tension zone), C20/25 to C50/60
- Suitable for attaching wooden structures, metal structures, metal profiles, brackets, grilles, sanitary ware, pipes, cable conduits, etc.
- Chemical injection mortar WIT-PE 500 can also be used for post-installed reinforcement connectors

2. Benefits

- Variable anchor depths
- Cartridges can be used up to expiration of the best before date by replacing the static mixer or by being closed again with the sealing cap
- Installation also at high temperatures (anchoring base)

3. Properties

- Cracked (M12 to M30) and non-cracked concrete (M8 to M30): European Technical Assessment ETA-09/0040
- For post-installed reinforcement connector see info [29.1](#): ETA-07/0313, Z-21.8-1834
- Chemical injection mortar, pure epoxy
- Temperature in anchoring base during use and curing: 5°C to +40°C
- Ambient temperature when fully cured -40°C to +72°C
- Transport and storage temperature (cartridge): +5°C to +25°C
- Shelf life (store in cool, dry and dark place): 24 months
- Styrol free

Setting instructions



ZEBRA SHARK ANCHORS

Zebra Shark Wall Plugs

Art. No. 00906...



Proof of performance

1. Applications

- Can be used with the largest possible screw diameter in solid and hollow-chamber stone, always enabling strong hold
- Pre-formed thread in head
- Three-part division for form-fitting or frictionally engaged anchoring
- Wings as twist lock in solid or hollow-chamber stone

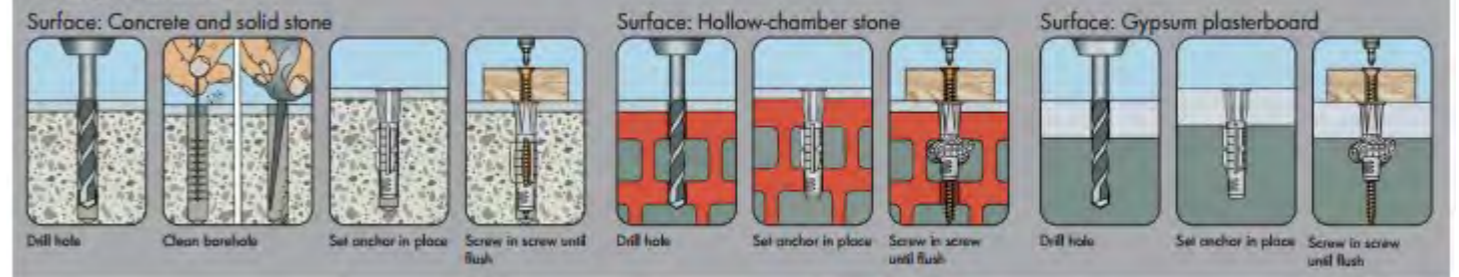
2. Advantages

- Low screw-in torque of WÜPOFAST® screw due to pre-formed thread
- Twist lock due to locking edge running lengthwise
- One screw diameter can be used - regardless of application
- In hollow stones/walls, form-fitting results due to knotting together or bending out of spreading segments

3. Properties

- The universal plug for subordinate securing in nearly all building materials
- In solid and hollow-chamber stone of any kind
- In gypsum plasterboard sheets, pressboard, wood panels etc.
- For use with stud screws, hooks, ring screws, WÜPOFAST®, ECOFAST® screws and wood screws
- Fully resistant to rotting, weather and aging
- Temperature-neutral from -40 °C to +100 °C

Setting instructions



Anchor Dimensions

Total length	l [in mm]	31	32	36	37	51	52	61	62	71	72
Max. attachment height	d _a [in mm]	Depends on screw length									
Designation		5 x 31	5 x 32	6 x 36	6 x 37	8 x 51	8 x 52	10 x 61	10 x 62	12 x 71	12 x 72
Art. No. ZEBRA Shark® anchors without collars		0906 005 31		0906 006 36		0906 008 51		0906 010 61		0906 012 71	
Art. No. ZEBRA Shark® anchors with collars			0906 005 32		0906 006 37		0906 008 52		0906 010 62		0906 012 72
Packing unit	P. Qty.	200	200	200	200	200	200	100	100	25	25

Fastening Systems For dry walling

Drywall Screws

Art. No. 00903 251 - Nylon

Art. No. 00903 252 1 - Zinc



Performance facts

1. Applications

- For secondary attachments in gypsum plasterboards/fibrous panels and light building boards
- For the attachment of components in conjunction with a wood or particle board screw (no drill tip, counter thread, ring thread)
- Can be used outside or in rooms subject to moisture in conjunction with a stainless-steel screw
- We recommend using type Z/L for double-planked boards
- Recommended universal bit mount:
Bit Mount with quick-action chuck - Art. No. 0614 176 711
Universal Mount - Art. No. 0614 176 708

2. Advantages

- The patented drive enables setting of an anchor with a PZ bit, AW bit or Torx bit, as the power transmission takes place via the hexagon (Detail 1)
- The patented twist lock is triggered by screwing in a screw. When unscrewing the screw, the gypsum plasterboard plug does not turn back and remains in the anchoring base (Detail 2)
- Less space required behind the board (only 15 mm)
- For use without a setting tool with a battery-powered screwdriver and appropriate bit for the respective screw

- The gypsum plasterboard anchor and the screw can be inserted with the same bit
- The new centering tip enables easy starting and drilling into the board
- Inexpensive, fast installation without pre-drilling
- Fast installation with a battery-powered screwdriver
- The component can be secured with wood or particle board screws (type Z + type Z/L = screw dia. of 4.5 mm/type K = screw dia. of 4.5 - 5 mm)

3. Properties

- High plastic or diecast zinc quality
- Temperature-neutral from -40°C to +80°C
- Form-fitting fastening

1/4" Bit Box

Art. No. 00614 250 7



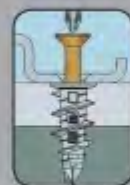
Setting instructions



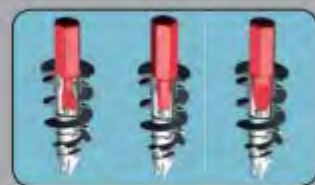
Press anchor tips into attachment surface



Screw in anchor until flush



Fit the component



Detail 1:
The patented drive enables setting with PZ bit, AW bit or Torx bit



Detail 2:
Patented twist lock

WIT-PE500 Chemical injection mortar, pure epoxy

Anchor Rod W-VDA/S galvanised steel

Art. No. 05915...



Dia.	Fastening height h_{fix} [mm]	Total Length L [mm]	Effective anchoring depth h_{ef} [mm]	Nom. drill dia. d_o [mm]	Drilled hole depth $h_o \geq$ [mm]	ETA approval	Art. No.
M8	20	110	80	10	80	ETA-12/0164	05915 108 110
M10	30	130	90	12	90	ETA-12/0164	05915 110 130
M12	35	160	110	14	110	ETA-12/0164	05915 112 160
M16	45	190	125	18	125	ETA-12/0164	05915 116 190
M20	60	260	170	24	170	ETA-12/0164	05915 120 260

Accessories

Art. No. 00905 499...

For Diameter	Drill nominal dia. d_o (mm)	Cleaning Brush	Machine Mounting	Blow-Out Pump
M6/50 without sleeve	8	00905 499 020	Hexagon	00903 990 001
With sleeve	12	00905 499 022		
M8/50 without sleeve	10	00905 499 021	Hexagon	
With sleeve	12	00905 499 022		
M8 without sleeve	10	00905 499 021	SDS	
With sleeve	18	00905 499 026		
M10 without sleeve	12	00905 499 022	SDS	
With sleeve	18	00905 499 024		
M12 without sleeve	14	00905 499 023	SDS	
With sleeve	18	00905 499 024		



Cleaning Brush...



Hex. Mounting...



SDS Mounting...



Blow Pump...

Sieve Sleeve for Masonry

Art. No. 00903 44...



Dia.	Total Length L (mm)	Nom. drill dia. d_o [mm]	Drilled hole depth $h_o \geq$ [mm]	Nom. drill dia. d_o [mm]	Effective anchoring depth h_{ef} [mm]	ETA approval	Art. No.
M12	80	12	85	12	80	ETA-13/0037 & ETA-16/0757	00903 44 123
M16	85	16	90	16	85	ETA-13/0037 & ETA-16/0757	00903 44 164
M16	130	16	135	16	130	ETA-13/0037 & ETA-16/0757	00903 44 165
M20	85	20	90	20	85	ETA-13/0037 & ETA-16/0757	00903 44 203

COMPOUND CHEMICAL ANCHOR Un-cracked concrete

Compound Chemical Anchors

Art. No. 05915...

Anchor Rods Galvanized

Art. No. 05915...



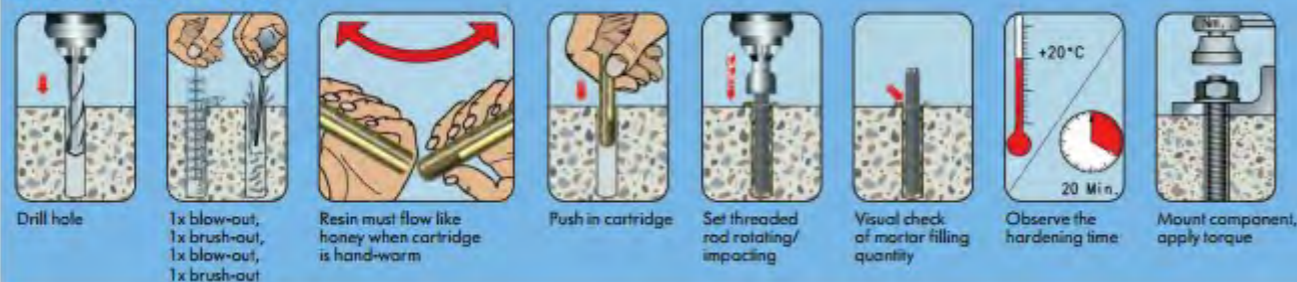
Evidence of performance

Approvals	Test reports
European Technical Approval Option B for uncracked concrete 	Fire Resistance

1. Applications

- Can be used for medium to heavy loads
- With European Technical Approval, the anchor can be used in reinforced or non-reinforced standard concrete with a strength class of at least C20/25 and at most C50/60 in accordance with EN 206:2000-12
- Anchorage with European Technical Approval in uncracked concrete (concrete pressure zone)
- The anchor may be used for anchorage with primarily static loads (e.g. own weight, installations, support materials) or quasi-static loads
- Installation in dry or wet concrete
- The temperature in the mortar area may not exceed +50°C and briefly +80°C
- For use in concrete < C20/25 and pressure-resistant natural stone (without approval)
- W-VD/S (galvanized steel) can be used in dry interior rooms

Setting instructions



Drill hole cleaning

Cleaning the drill hole: 1x blow-out, 1x brush-out, 1x blow-out, 1x brush-out

Installation instructions

Set anchor bar rotating and + impacting with hammer drill or percussion drill.

- Suitable for fastening metal constructions, metal profiles, brackets, foot plates, supports, wood structures, beams etc.

2. Advantages

- Heavy loads, small axial and edge distances
- Hardened composite mortar largely seals off the drill hole
- Attachment with low expansion pressure allows small edge and axial clearances

3. Properties

- Anchoring through bond between mortar, anchor bar and anchoring base. Galvanized anchor bar in the sizes M8, M10, M12, M16, M20 and M24
- Galvanized steel: European Technical Approval ETA-06/0074
- Dimensioned in accordance with the "Guideline for European Technical Approval (ETAG) of Metal Anchors for Use in Concrete", Annex C, dimensioning method A
- Fire resistance: **F30, F60, F90, F120**: One-sided fire stress according to DIN EN 1363-1:1999-10

COMPOUND CHEMICAL ANCHOR Un-cracked concrete

Compound Chemical Anchors

Art. No. 05915...



Performance data		M8	M10	M12	M16	M20
Perm. load of a single anchor w/o edge influence	Pressure zone (uncracked concrete C20/25 M8: $s \geq 3 h_{ef}$, $c \geq 1.5 h_{ef}$ M10-M24: $s \geq 2 h_{ef}$, $c \geq 1 h_{ef}$)	$N_{perm} [kN] = C20/25$ 50°C/80°C				
	Pressure zone (uncracked concrete C20/25, $c \geq 10 h_{ef}$)	$V_{perm} [kN] = C20/25$				
Permissible bending torque	$M_{perm} [Nm]$	10.9	21.1	37.1	94.9	185.7
	F30 [kN]	2.3	3.64	5.26	9.79	15.28
Fire resistance duration	F60 [kN]	1.29	2.04	3.07	5.72	8.93
	F90 [kN]	0.79	1.3	2.0	3.68	5.75
	F120 [kN]	0.53	1.0	1.5	2.67	4.16

Characteristic values

Minimum axial spacing	$s_{min} [mm]$	40	45	55	65	85
Axial spacing	$s_{ax,A} [mm]$	240	180	220	250	340
Minimum edge spacing	$c_{min} [mm]$	40	45	55	65	85
Edge spacing	$c_{ax,A} [mm]$	120	90	110	125	170
Minimum component thickness	$h_{min} [mm]$	110	120	140	160	220
Effective anchoring depth	$h_{ef} [mm]$	80	90	110	125	170
Nom. drill dia.	$d_o [mm]$	10	12	14	18	25
Drill cutting dia.	$d_{cut} \leq [mm]$	10.5	12.5	14.5	18.5	25.5
Drilled hole depth	$h_o \geq [mm]$	80	90	110	125	170
Through-hole in component to be connected	$d_t \leq [mm]$	9	12	14	18	22
Torque during anchoring	$T_{inst} = [Nm]$	10	20	40	80	120
Cleaning brush dia.	$D [mm]$	10.8	13	15	19	27

Anchor Rods Galvanized

Art. No. 05915...



Anchor dimensions		M8	M10	M12	M16	M20
Anchor diameter						
Total length	$l [mm]$	20 110	30 130	35 160	45 190	60 260
max. mounting height	$f_{th} [mm]$					
Designation	Anchor bar	10 5915 108 110 W-VD-A/S-M8-20/110	10 5915 110 130 W-VD-A/S-M10-30/130	10 5915 112 160 W-VD-A/S-M12-35/160	10 5915 116 190 W-VD-A/S-M16-45/190	10 5915 120 260 W-VD-A/S-M20-60/260
W-VD-A/S Anchor Bar, galvanized steel	Art. No.					
Packing unit	P. Qty.					